

ONYX® 2" IC Target, MAG.II

Metric Specifications

Construction

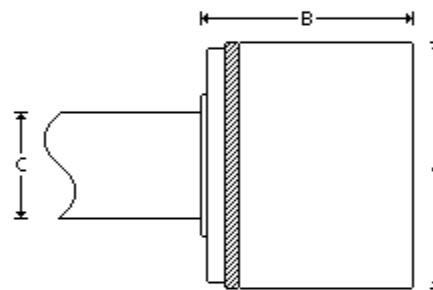
Anode	304 Stainless Steel
Cathode Body	OFHC Copper
Insulator	CTFE

Cooling Requirements

Flow Rate at Maximum Power	0.05 LPS
Maximum Input Pressure, Open Drain	4 BAR
Maximum Input Temperature	20 °C

Dimensions

A	71.5 mm
B	71.8 mm
C	19.1 mm



General

Magnetic Enhancement	Permanent (NdFeB) Encapsulated
Maximum Temperature	100 °C
Source to Substrate Distance	50.8 mm - 304.8 mm
Weight, Approximate Without Options	1.4 kg

Maximum Sputtering Power *

Cathode Voltage	100 - 1500 Volts
Discharge Current	0.1 - 2 Amps
Indirect Cooled Mode, DC	1 kW
Indirect Cooled Mode, RF	600 Watts
Operating Pressure	0.5 - 50 mTorr

Mounting, Standard

Power Cable, DC	1675A
Power Cable, RF	1675A
Power Connector, DC	Type N Connector, External Threads
Power Connector, RF	Type HN Connector, External Threads
Stem, Outer Dimension Tubing	19.1 mm
Water, Outer Dimension Tubing	6.4 mm

Target

Cooling	Indirect
Diameter	50.8 mm
Form	Circular / Planar
Thickness, Magnetic	Up to 3.2 mm Ni
Thickness, Non-Magnetic	0.3 mm - 9.6 mm

Specifications Disclaimer

- All Angstrom Sciences NdFeB magnets are totally encapsulated and protected from degradation by water.
 - All sources are available in external configurations.
 - Magnetic material calculations are optimized with Nickel targets.
 - * Maximum power for cathode only, a target material's properties, such as, thermal and electrical conductivity may limit the maximum process power level.
 - Some custom-engineered and specialty magnetrons may not meet standard specifications.
 - Specifications are subject to change without notice.
 - Thickness will vary depending upon coercivity of target material.
 - Typical performance. Results may vary with process parameters such as pressure, flow rate, target material, and substrate rotation, etc.
-

Please contact us for specifications regarding your application.

Angstrom Sciences | Call +1-412-469-8466 | www.angstromsciences.com